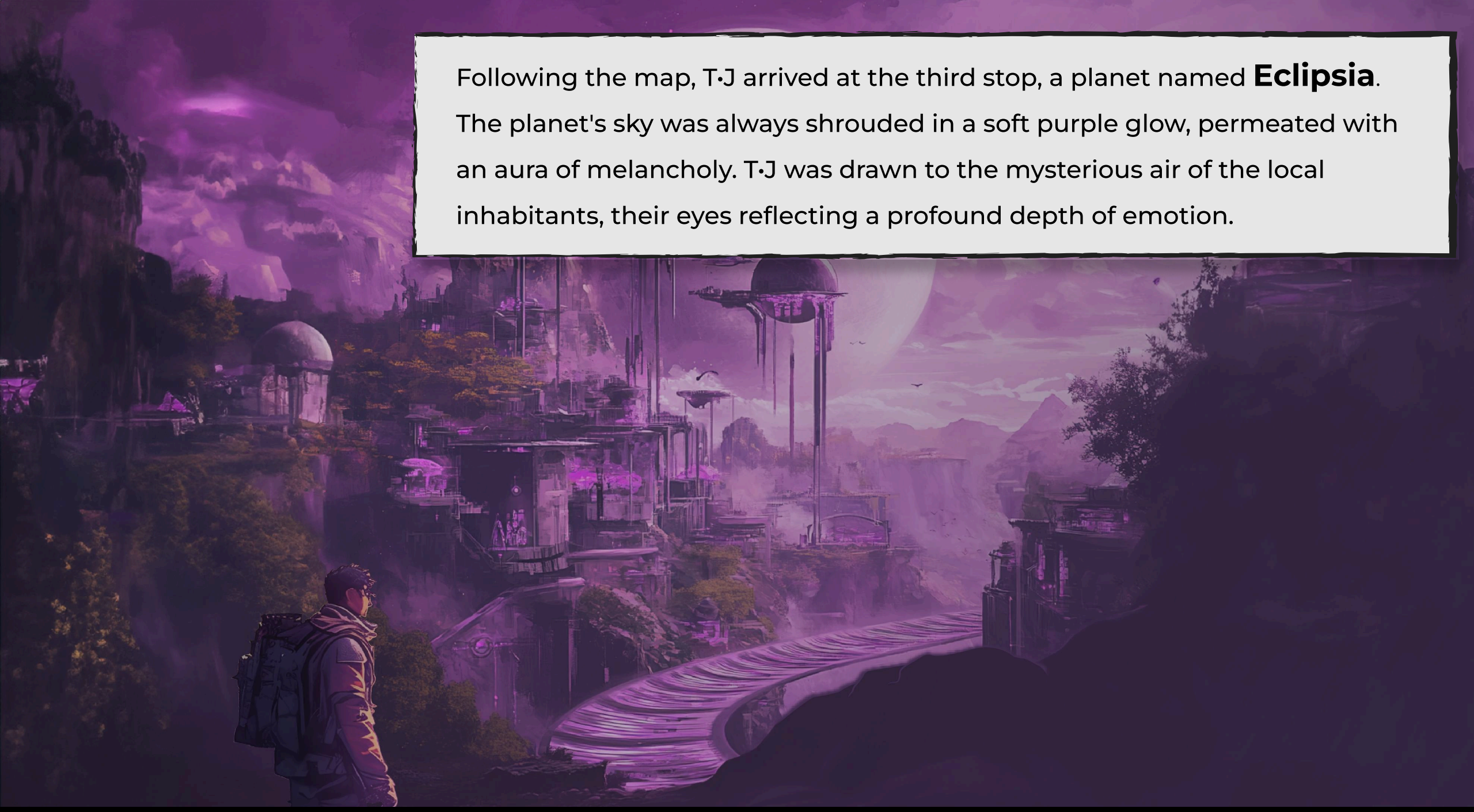


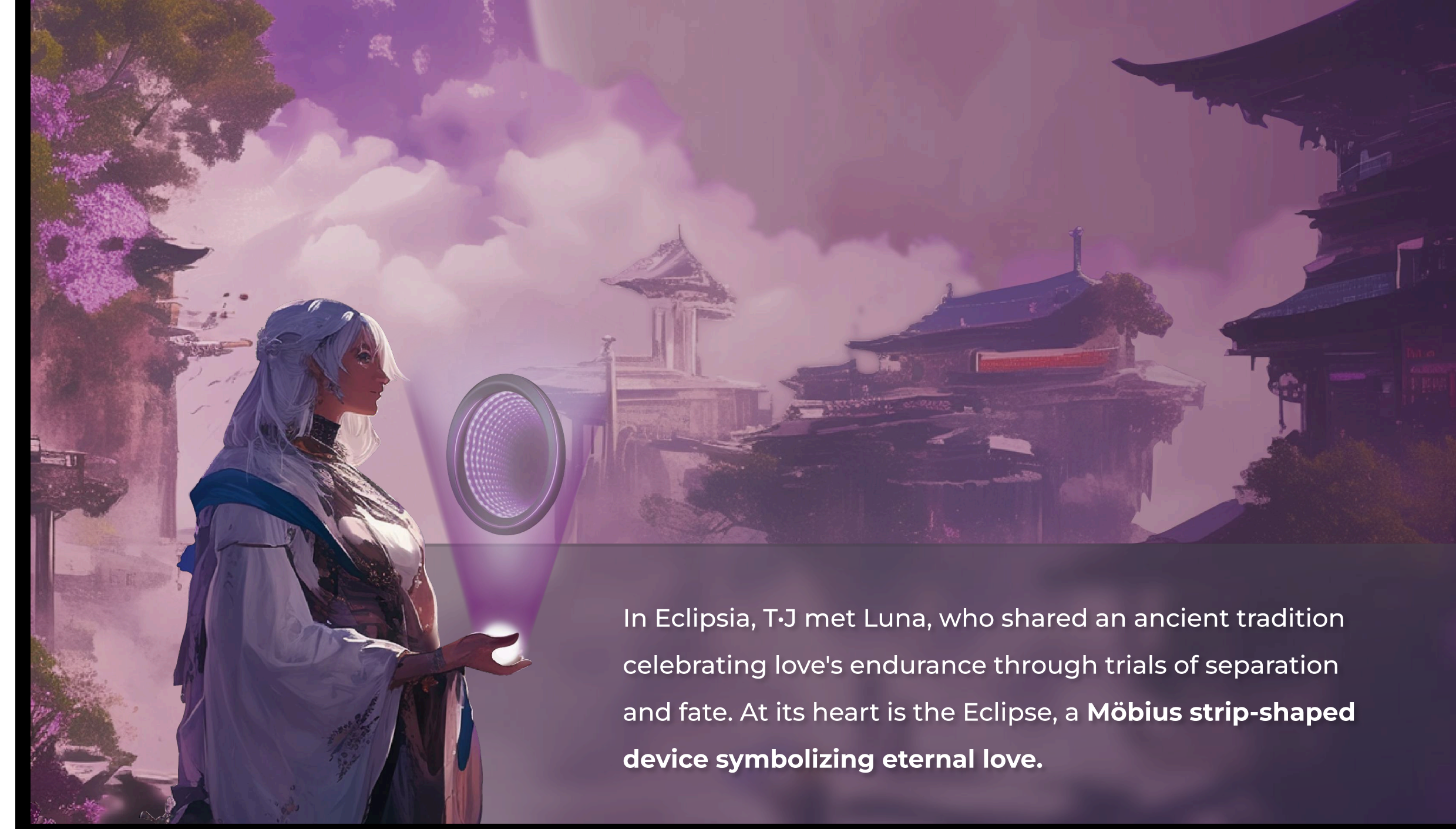


ELAPSA

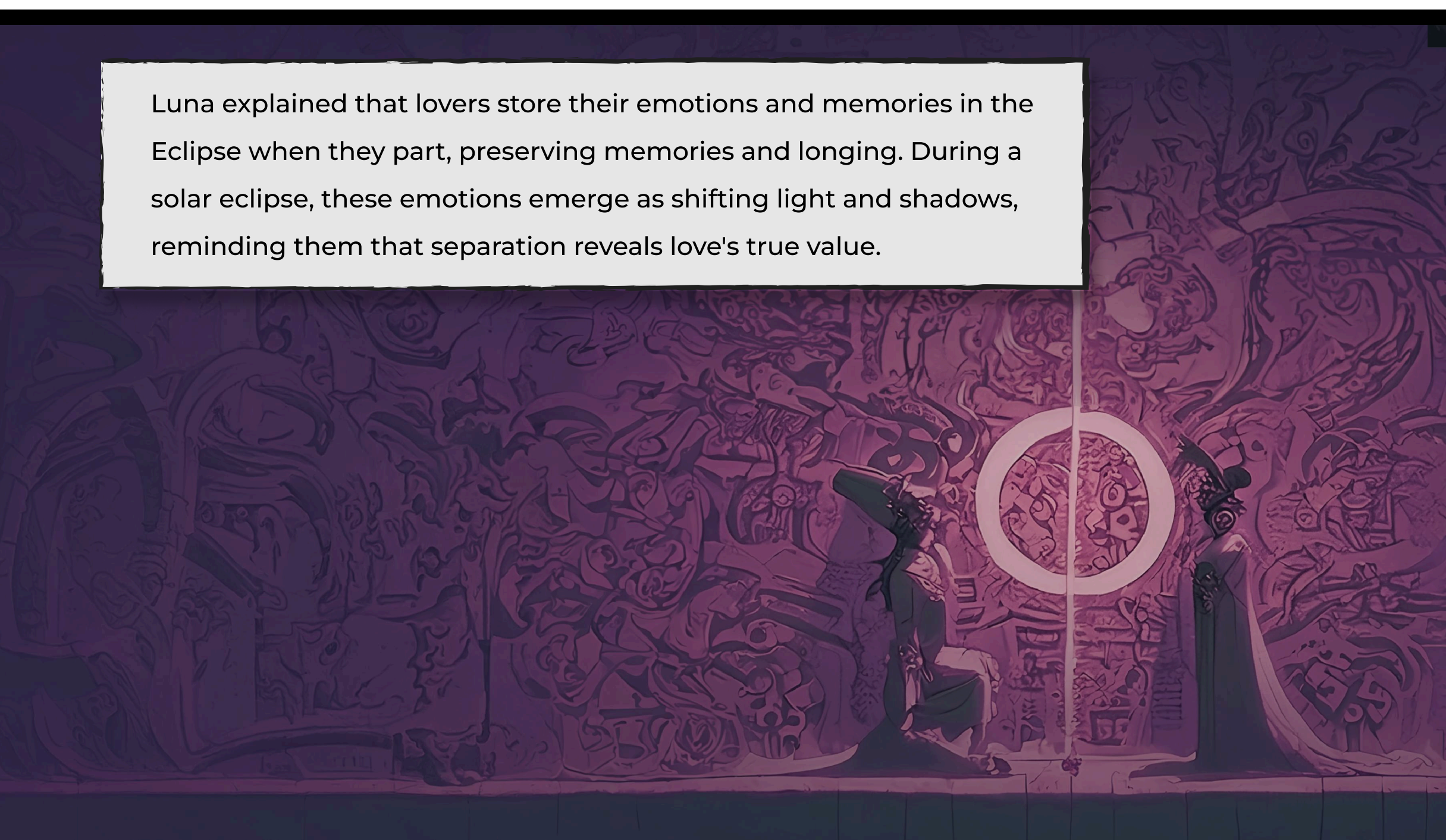
Following the map, T·J arrived at the third stop, a planet named **Eclipsia**. The planet's sky was always shrouded in a soft purple glow, permeated with an aura of melancholy. T·J was drawn to the mysterious air of the local inhabitants, their eyes reflecting a profound depth of emotion.



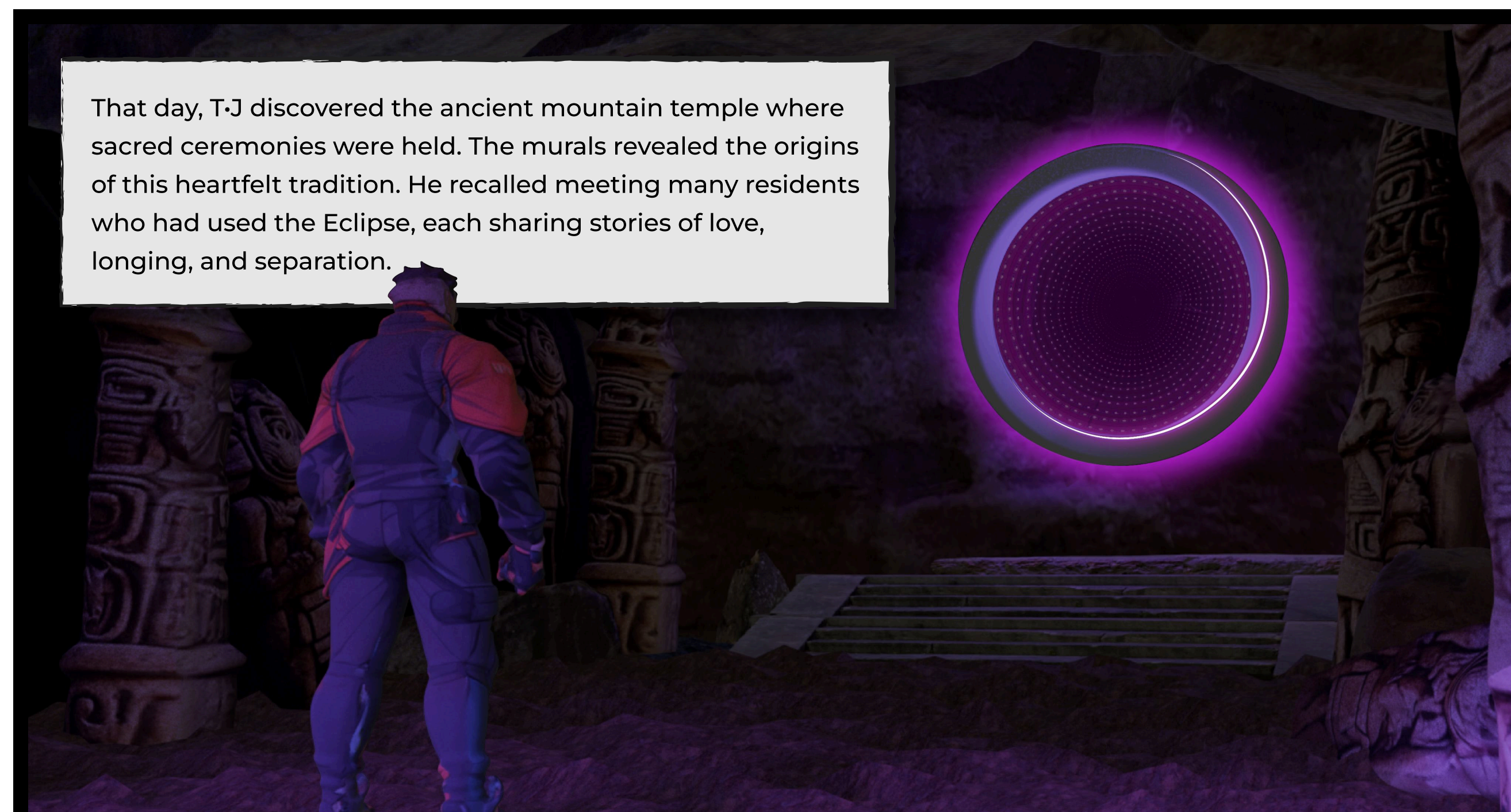
In Eclipsia, T·J met Luna, who shared an ancient tradition celebrating love's endurance through trials of separation and fate. At its heart is the Eclipse, a **Möbius strip-shaped device symbolizing eternal love**.

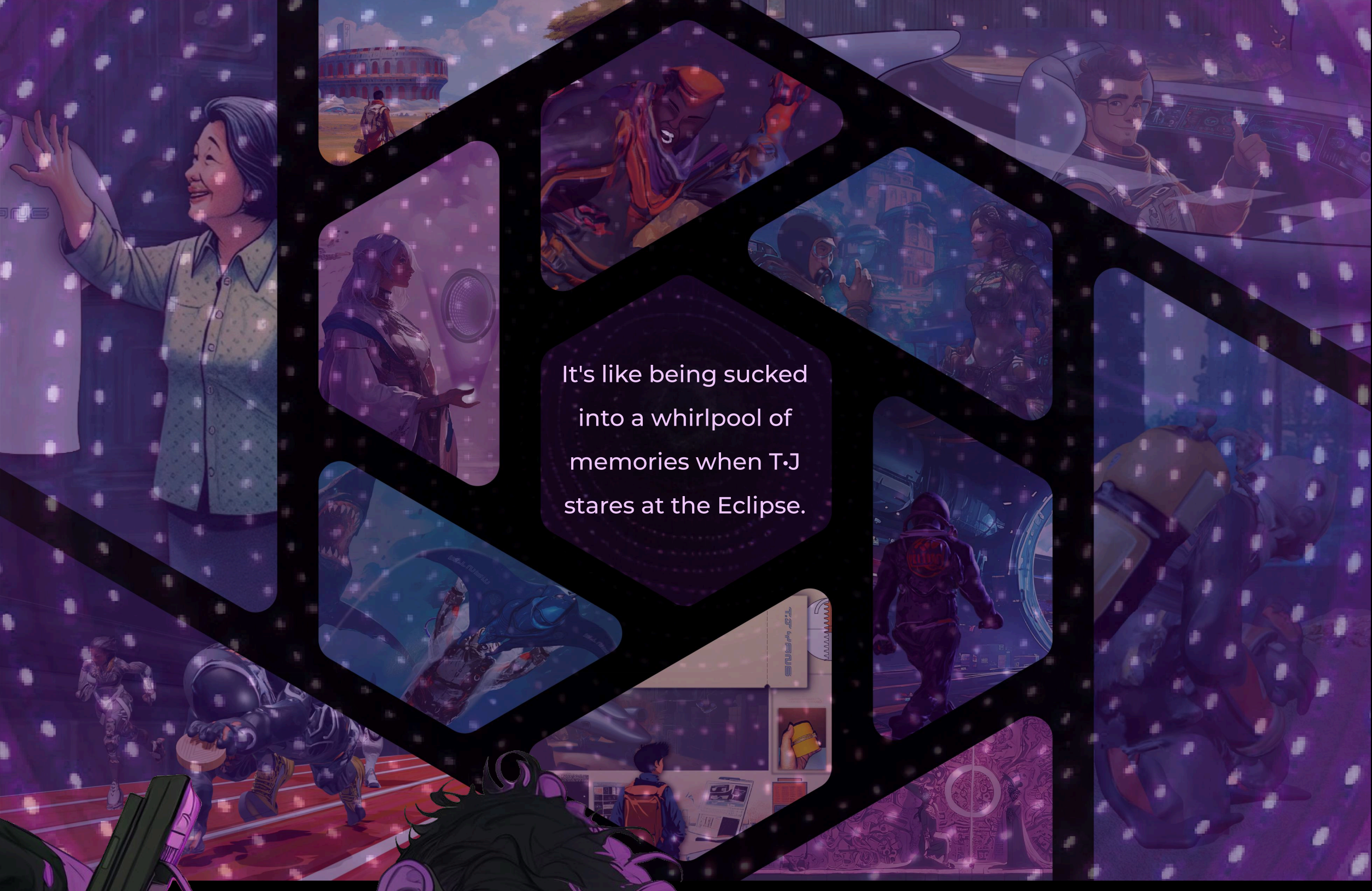


Luna explained that lovers store their emotions and memories in the Eclipse when they part, preserving memories and longing. During a solar eclipse, these emotions emerge as shifting light and shadows, reminding them that separation reveals love's true value.

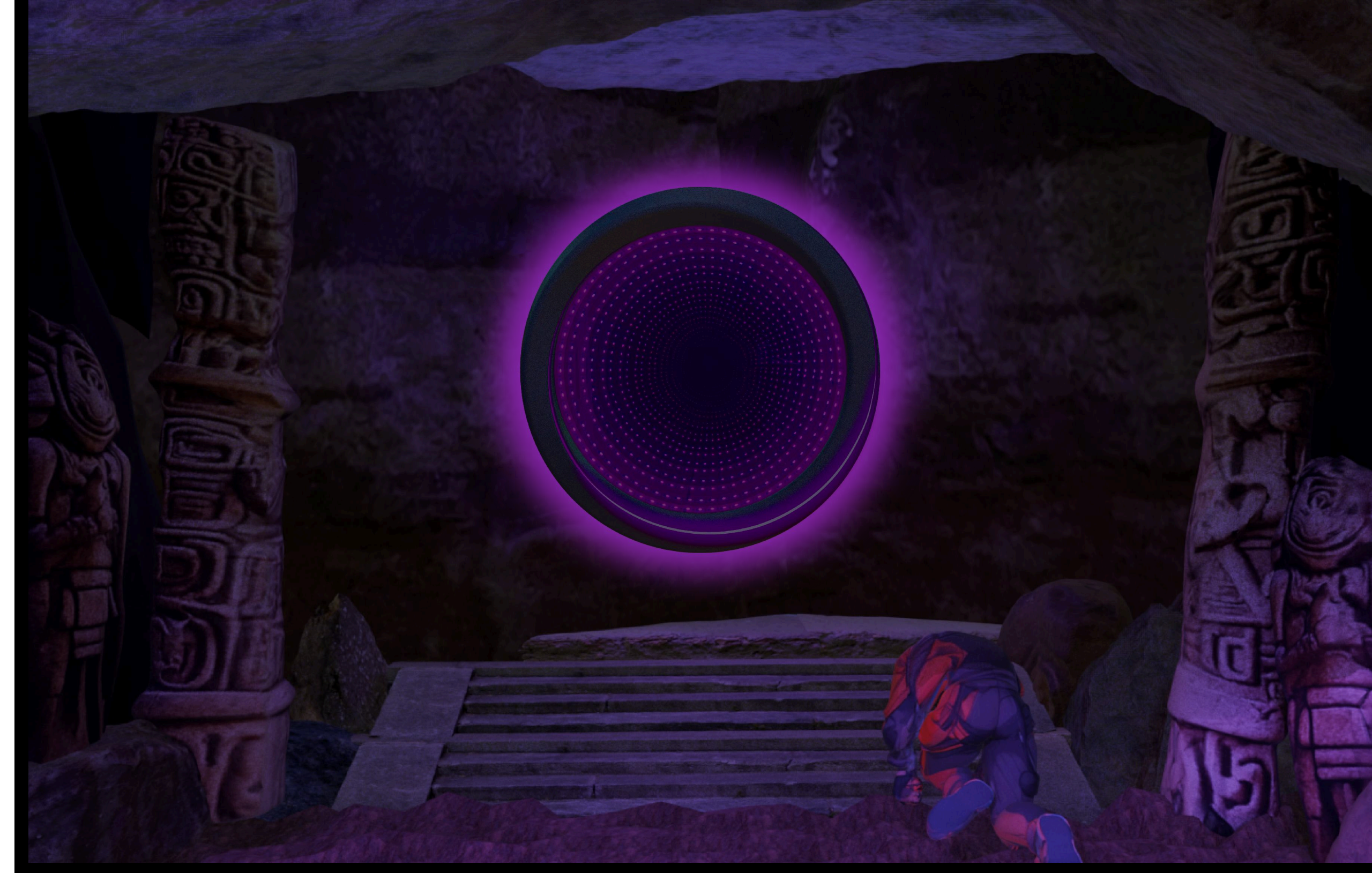


That day, T·J discovered the ancient mountain temple where sacred ceremonies were held. The murals revealed the origins of this heartfelt tradition. He recalled meeting many residents who had used the Eclipse, each sharing stories of love, longing, and separation.

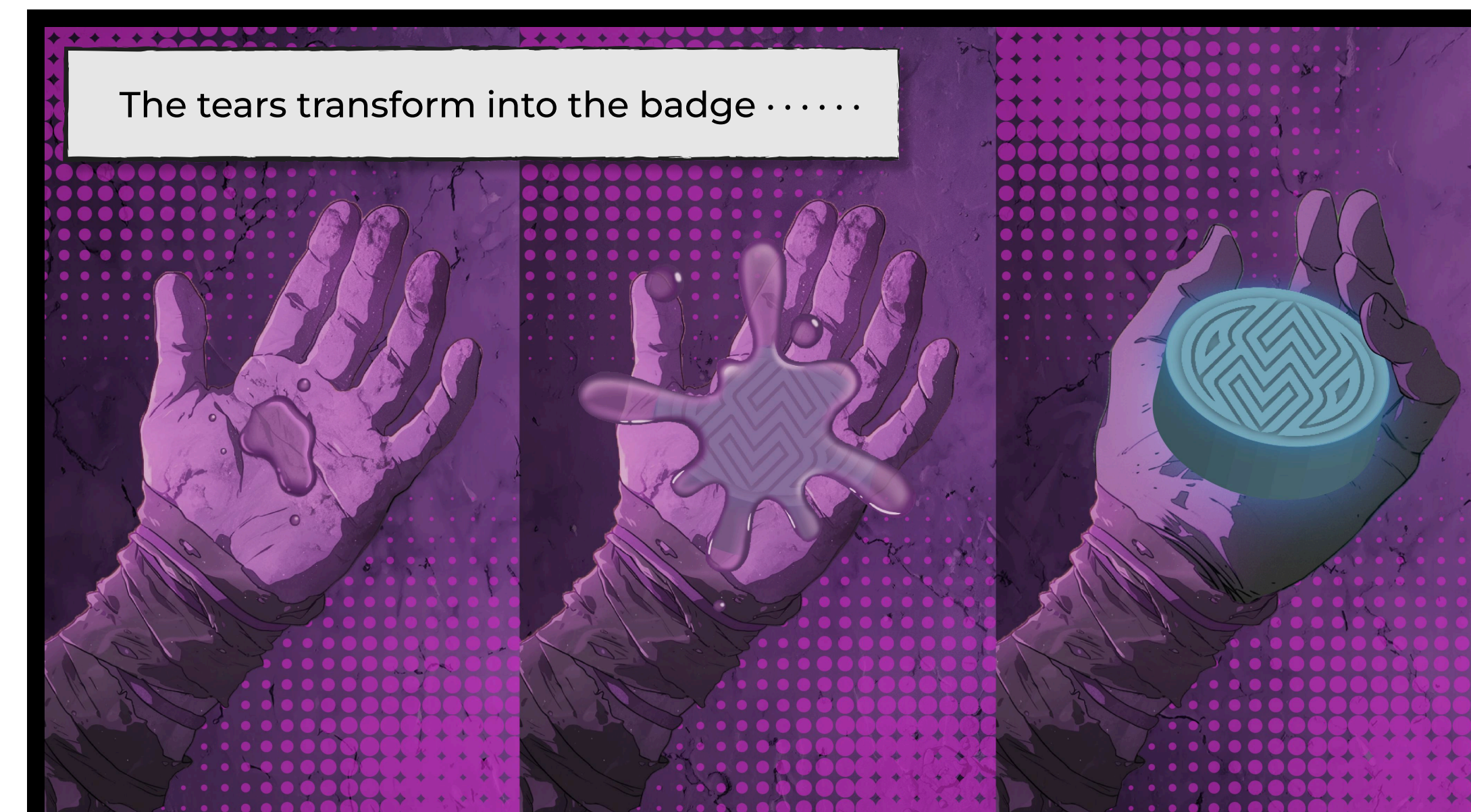




It's like being sucked
into a whirlpool of
memories when T·J
stares at the Eclipse.



Alone in the temple, T·J wept, overwhelmed by
emotion. He earned the "**spiritual badge of
eternal love and separation**" through this
release. Strengthened and renewed, he set off
toward the final destination on his map.



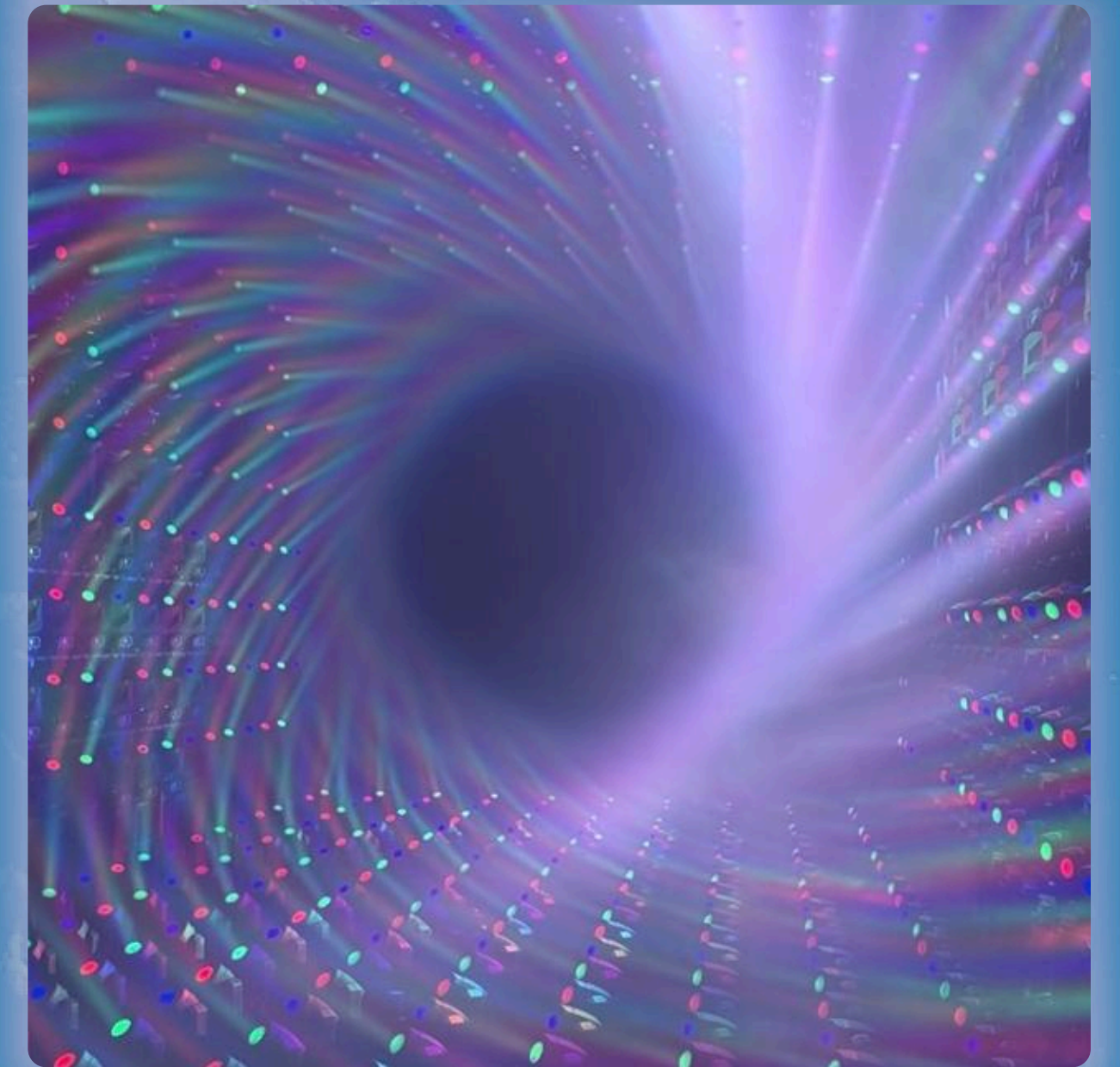
The tears transform into the badge

ECLIPSE



Eternal Loving, Eternal Chasing.

Concept



ECLIPSE

(Bio clock lighting function)



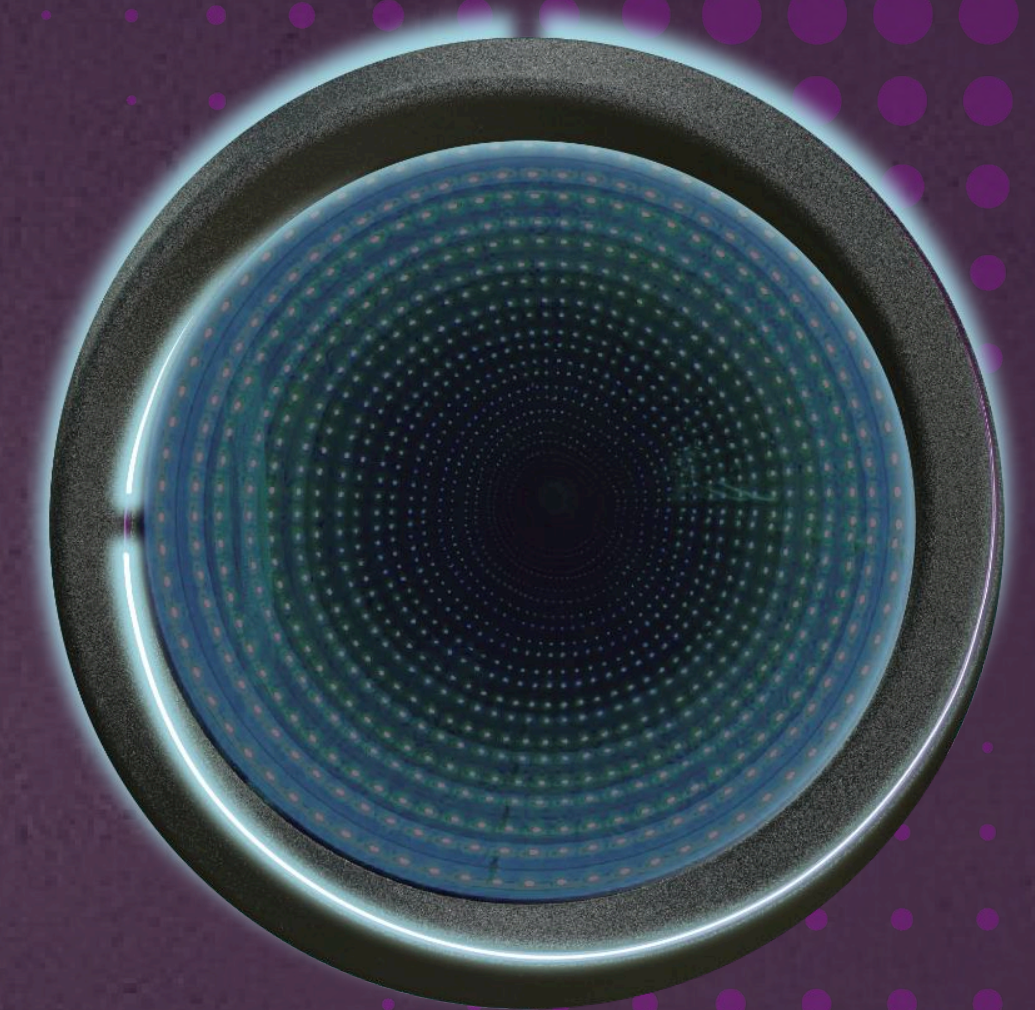
21 O'clock

Since design students are often most inspired at night, the Eclipse light will emit a 5000K daylight color temperature to enhance focus and support their work.



3 O'clock

As creative work often wraps up around midnight, the Eclipse light will shift to a warm, sunset color temperature of 1000K, helping design students wind down and ease into rest.



9 O'clock

For busy design students who stay up late, the morning is key for catching up on sleep. The Eclipse light shifts to a soothing 10,000K moonlight, promoting restful sleep.